



# FOSTERING A FUTURE OF INDEPENDENCE & BELONGING FOR ALL



*I am super excited to be independent and living in my new apartment at Prairie Haus. Thank you so much for this amazing opportunity. I am so grateful.*

– Ashley, Prairie Haus Tenant

*We couldn't ask for a better place to live and are so proud to live here at Prairie Haus and in the New Glarus community.*

– Danielle, Prairie Haus Tenant

**Mary Anne Oemichen, Executive Director**  
maryanne@homeofourown.org

Mar 4, 2025



# The HOOO Story

---

- HOOO began with a family led group that wanted to create stable, affordable rental homes for disabled adults who deserved to be independent, and for others who needed affordable housing
- HOOO partnered with a Dane County based nonprofit to plan for Prairie Haus and its spaces/amenities
- HOOO raised 500k towards the \$9 million capital campaign
- HOOO's ongoing role: building-wide activities/programming, community connections, building amenities, consulting with other groups nationwide who want to create their own inclusive communities



# Prairie Haus

---

- 40-unit, affordable, inclusive apartment building
- All family structures; age range from toddlers to 80's.
- Tenant population includes 10 with autism, others with Rett's Syndrome, cerebral palsy, traumatic brain injuries, cognitive, and physical mobility challenges, with the balance being neuro-typical
- Approximately 10 disabled tenants require 1:1 24/7 support; others require some or no supports.



# Outdoor Spaces Contribute to Well-Being

---

- Sensory/movement options: swings, green spaces, raised garden beds
- Not just recreation, but needed for neurological regulation
- Multiple patios for gathering and socialization, including a rooftop deck
- Basketball hoop, balls and outdoor toys, chalk art
- Proximity to Sugar River biking/walking trail
- Walking distance to all major community amenities (grocery store, banks, restaurants, schools, pharmacy, etc.)



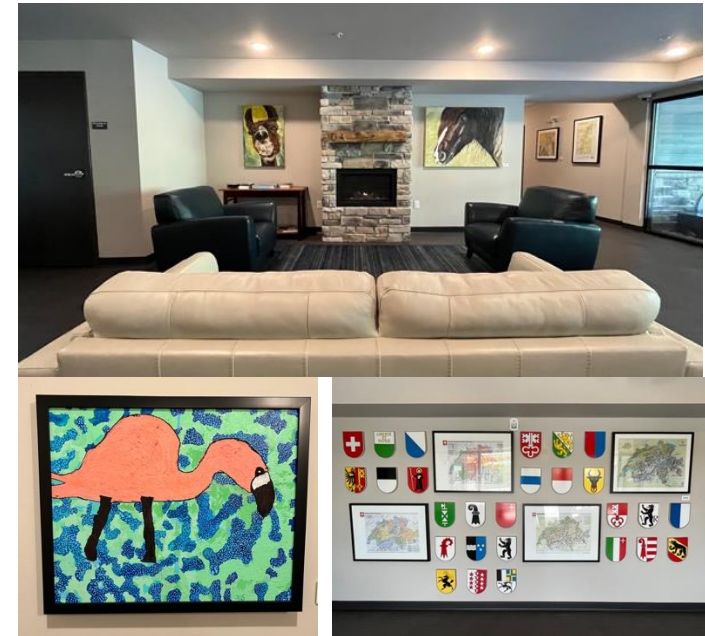




# Indoor Spaces Contribute to Well-Being

---

- Areas to encourage socialization outside of tenant apartments: community kitchens, puzzle and game tables, little free library, TV/gaming system, food pantry, cozy reading corners and fireplace seating, indoor glider/swings, local art-filled hallways and common spaces
- Culturally appropriate – artwork mix (local artists, local nod, disabled artists)
- Indoor walking loop
- Onsite salon with visiting stylist – great for those with mobility challenges
- Apartments have “condo level” soundproofing for a more comfortable environment in addition to other accessibility features





# Indoor Activities Contribute to Well-Being

---

- The key: get people out of their apartments, moving where possible, and interacting with one another and the community at large
- Fosters and promotes inclusivity
- Enables disabled residents to feel they are part of a community that cares
- Gives neuro-typical tenants the chance to find out disabled tenants are not so different from themselves
- Monthly special events and meaningful activities have included live music, informal events, holiday meals, bingo nights, author readings, annual first responder event, planting events
- Health and wellness events include healthy eating demonstrations, blood pressure checks, vaccine clinics and therapy dog visits



# HOSTING UPLIFTING EVENTS



44  
connection  
opportunities –  
both big  
and small







604  
individuals  
(combined)  
attended  
events









Tenants  
enjoyed a dinner  
with area first  
responders.













## Engaging Volunteers





**A Special  
Edgewood College  
School of Nursing  
Partnership**







# Service Provision

---

- Residential support is provided by IRIS (self-directed) or family care based on individual functioning levels and corresponding budgets
- Money flows from Medicaid to the state to the service provider
- Budgets are developed annually and can also include things like transportation and vocational/day services





# The Need is Great

---

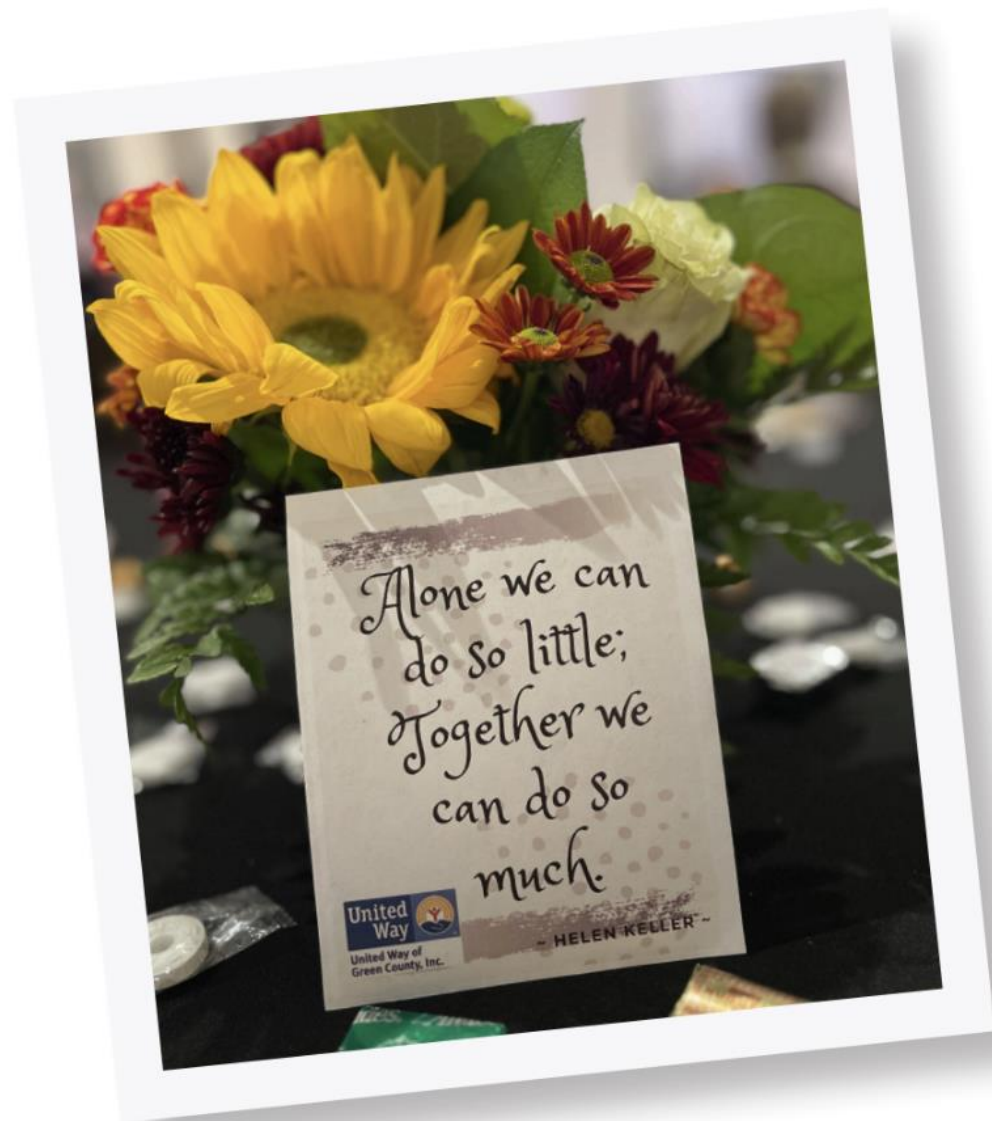


- Regular contact from grassroots groups nationwide who want to create inclusive, affordable communities illustrates the need
- The need for housing for people with autism is especially severe. Requires thoughtfulness about sensory and movement needs
- Projects are springing up all around the state









 Visit our Facebook page @HOOOWisconsin to see our mission in action!



United Way of Green County, Inc.  
is a Home of Our Own, Inc.  
funding source.

**Home of Our Own, Inc.**  
W6159 Legler Valley Rd, New Glarus, WI 53574  
info@homeofourown.org | homeofourown.org

